



SHEBOYGAN COUNTY

Division of Public Health
Health and Human Services Department



Sheboygan County COVID19 Status Update

DATE: 4/19/2020, 2:00pm CST

****We will be providing these updates daily by 3pm.**

Current Situation Update*

Wisconsin Confirmed Case Count	4,346
Sheboygan County Total Confirmed Case Count	44
Sheboygan County ACTIVE Cases	15
Sheboygan County RECOVERED Cases	27
Sheboygan County COVID19 DEATHS	2
Sheboygan County Negative Tests Reported to Public Health	656

*Confirmed Case Counts as of 2pm 4/19/2020

Case Updates and Monitoring:

Wisconsin State Cases:

- Information on most up to date case counts statewide can be found [here](#).

****Sheboygan Case Updates:**

- Sheboygan County currently has 44 confirmed cases of COVID-19. Of those, 27 cases have recovered and are no longer ill. Of the active cases, 4 are currently hospitalized.
- 19 confirmed cases are associated with the Sunny Ridge outbreak. Of those, 4 are active, 13 are recovered, and 2 are deceased. The individuals who passed away are in the 60+ age group.
- Active cases** are defined as those individuals who are currently ill and requiring medical care or are in isolation.
- Recovered cases** are defined as confirmed cases where at least 3 days/72 hours have passed since recovery, defined as resolution of fever without the use of fever-reducing medications and improvement in respiratory symptoms, **AND** at least 7 days have passed since symptoms first appeared.
- Negative Tests** are defined as a COVID-19 test with a negative result that was reported to Public Health. For information on testing, see WI testing priorities and procedures section.



SHEBOYGAN COUNTY

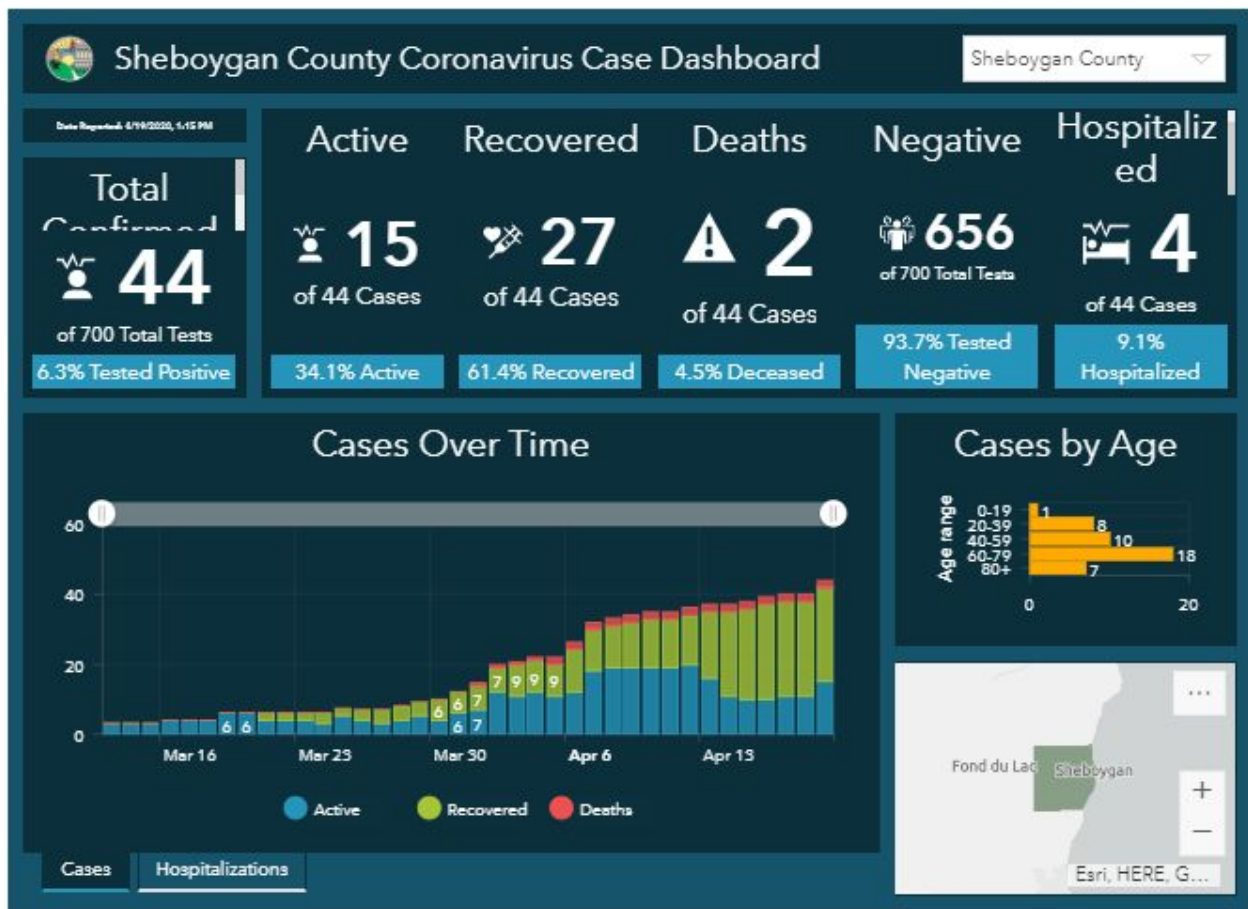
Division of Public Health
Health and Human Services Department



Sheboygan County Data Dashboard:

We are releasing our new, interactive visual data dashboard. Below are screenshots of the data. The full interactive dashboard can be found here:

- Desktop Version:
<https://shebco.maps.arcgis.com/apps/opsdashboard/index.html#/810a424effac403a82204fed374c78d4>
- Mobile/Phone Version:
<https://shebco.maps.arcgis.com/apps/opsdashboard/index.html#/6b8df15195f04d72a6de2f8c3fd4eee3>





SHEBOYGAN COUNTY

Division of Public Health
Health and Human Services Department



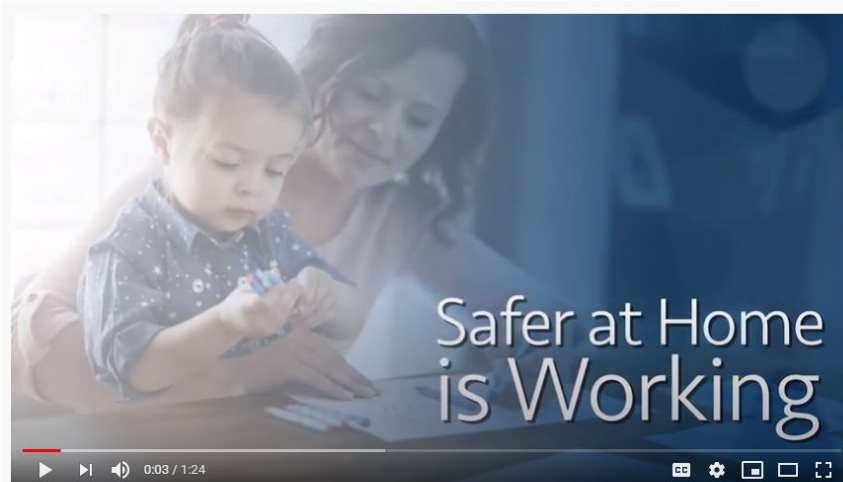
Highlights of what is NEW in Today's Update

- Sheboygan Case Counts
- Key Community Messaging--Safer at Home

Updated information is denoted by a ** prior to the bullet in the report below

TODAY'S KEY COMMUNITY PREVENTION MESSAGING:

SAFER AT HOME IS WORKING. LET'S KEEP IT UP!



#SaferAtHome: We're All in this Together

Watch WI key leaders talk about how Safer at Home is working in WI at the [link found here!](#)

The best strategy we have to slow the spread of COVID-19 is to limit physical contact between people. This is why Safer at Home is working. Our models show that Safer at Home has saved between 300 and 1,400 lives. Wisconsin has seen a decrease in the exponential growth in the number of cases since Safer at Home was put into place.

- Wisconsin's rate of doubling of infections was 3.4 days in early March before Safer at Home.
- Over the past two weeks, the rate of doubling is now approximately 12 days.

This means that the curve is beginning to flatten, and Wisconsinites need to continue staying Safer at Home and practicing physical distancing. To allow us to continue flattening the curve,



SHEBOYGAN COUNTY

*Division of Public Health
Health and Human Services Department*



Wisconsin's Safer at Home order has been extended until 8 a.m. on Tuesday, May 26, or until a superseding order is issued.

Before we lift Safer at Home, more testing and more robust public health measures must be in place.

These steps will help us reduce the risk of a second wave of the virus. If we open up too soon, we risk overwhelming our hospitals and requiring more drastic physical distancing measures again.

The point of these policies is to prevent our health care system from becoming overwhelmed. By reducing the number of cases and delaying the peak number of cases, we are able to build our health care capacity. This includes increasing capacity through buying needed medical supplies, finding more health care professionals, and ensuring adequate hospital beds. It also means we need to increase our public health capacity so that we can increase testing and continue to expand our contact tracing teams.

We will get through this. With all of us doing our part by staying Safer at Home, we will flatten the curve and save lives.

****IMPORTANT NOTE ON FUTURE UPDATES****

Due to feedback on the length and repetition of this update, we will be changing the way in which we report our updates. After **1 week** of information not changing, we will remove it from the physical update. This will help to provide a more concise update, highlighting the newest information. All of the information that is removed from the update after 1 week can be found on the website:

<https://www.sheboygancounty.com/departments/departments-f-q/health-and-human-services/public-health/communicable-disease/coronavirus-covid-19>

Sunny Ridge Outbreak Updates:

- Currently 19 confirmed cases are associated with the Sunny Ridge outbreak. Of those, 4 are active, 13 are recovered, and 2 are deceased.
- Public Health is currently working on a contact investigation associated with Sunny Ridge Nursing & Rehabilitation Center since Tuesday, March 31st.
- [National Guard Testing at Sunny Ridge Press Release](#)
- [Initial April 4th, 2020 Press Release](#)

Healthcare System Updates:

- Ascension Medical Group Wisconsin launched a [Respiratory Care Site in Sheboygan](#) last week, that is dedicated to caring for COVID-19 suspected or confirmed patients. Respiratory Care Sites are by appointment only. Patients must be pre-screened by an Ascension Wisconsin provider before visiting a respiratory care site.



SHEBOYGAN COUNTY

*Division of Public Health
Health and Human Services Department*



Personal Protective Equipment (PPE) Updates:

- HSHS St. Nicholas Hospital will continue accepting donated, hand-made masks at the outside of the Chapel Entrance until Friday, April 17 from 9 a.m. to 4 p.m. each day.

More information:

<https://www.stnicholashospital.org/Hospital-Information/Media/Press-Releases/HSHS-St-Nicholas-Hospital-extends-mask-collection/>

Business and Employer Updates:

- [DHS Guidance for Asymptomatic employees return to work](#)--Revised 4/13/2020

Executive Orders Updates:

- [Gov. Evers Directs DHS to Extend Wisconsin's Safer at Home Order until May 26th](#)
- [Updated Safer at Home FAQ](#)
- Sheboygan County [Order Postponing Opening of Campgrounds](#)--4/15/2020

Mental Health Resources:

- Check out Mental Health America's [COVID Mental Health Toolkit](#) for great resources to take care of your mental health during this difficult time. For more info, visit their website: <https://www.mhasheboygan.org/>

Additional Resources:

- [Updated Sheboygan County COVID Community Resources](#)

Please watch for our local community updates through our [public health email](#), our [website](#), and [Facebook](#). If you have any immediate questions, please call 211 for general inquiries or contact the Sheboygan County Division of Public Health during business hours (Monday-Friday; 8:00 am - 5:00 pm) at 920-459-0321.